

# STILE ATELIER

Immagina, crea, osa

S/S '18



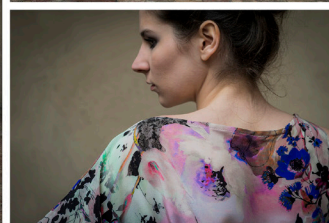
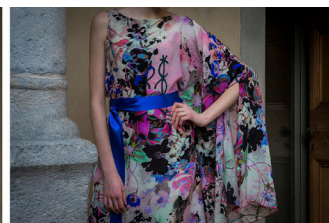
Tailormade

Bergamo



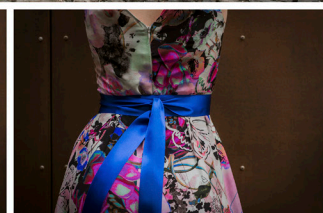
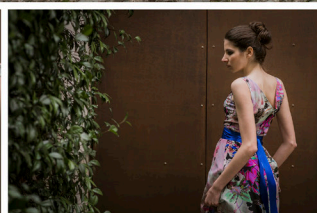
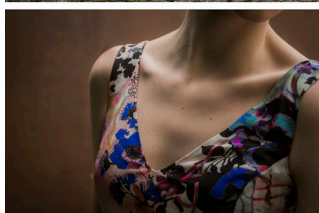
KAFKATAN  
MARIPOSA MODEL  
Flared sleeveless long dress  
with V-neck  
and satin belt in contrast

100% silk



SLEEVELESS DRESS  
VENUS MODEL  
Flared sleeveless long dress  
with V-neck  
and satin belt in contrast

100% silk

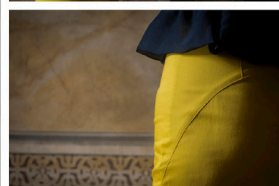
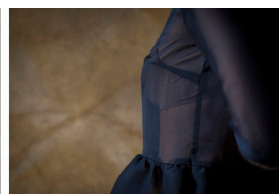






LIGHT BLUE SHEAT DRESS  
 TAORMINA MODEL  
 Polyester crepe  
 oversleeve sheath dress  
 with sheer  
 effect voile inserts

100% polyester



YELLOW SKIRT  
 AND BLUE SHIRT  
 POSITANO MODEL  
 High waist sheath skirt  
 with overlapping tear on  
 the back. Cotton with  
 satineffect

98% cotton  
 2% elastane

Sheer effect voile 7/8  
 sleeve shirt  
 with curled frill

100% polyester



RED DRESS  
 LADY MODEL  
 Oversleeve 7/8 dress,  
 back V-neck  
 and overlapping tear on  
 the back.  
 Opaque stretching  
 technical textile and  
 handmade stitching  
 with pink silk thread

98% polyester 2% elastane



KIMONO JACKET  
 SHIRT AND TROUSERS  
 QUEEN KIMONO,  
 QUEEN CREME AND QUEEN  
 ROUGE MODEL  
 Turn-up sleeve kimono  
 jacket in brocade textile  
 with belt.  
 Precious colors trio  
 98% polyester 2% lurex

High waist  
 and wide leg trousers  
 with curled waist and  
 soft crotch. Shiny stretching  
 technical textile

98% polyester 2% elastane

Kimono shirt  
 with soft curled sleeve

100% viscosa





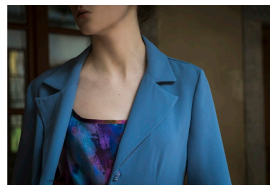


CROPPED SHIRT  
AND TROUSERS  
URBAN BLU MODEL  
Blue cropped shirt  
with butterfly sleeve,  
drop shape on the back  
and hook fastener.  
Light wool textile

100% wool

High waist and wide  
leg 7/8 trousers  
with curled waist  
and soft crotch.  
Particular high hem  
in contrast.  
Soft denim patterned textile

80% cotton 20% silk



LIGHT BLUE JACKET  
CAPRI MODEL  
Polyester crepe unlined blazer  
with applied pockets.  
Internal handmade stitching

100% poliyester



CHEMISE DRESS  
SOFIA MODEL  
Soft chemise dress  
with below knee length

100% silk



LONG DRESS  
WITH LITTLE FLOWERS  
SPRING MODEL  
Flared long dress  
cut to the waist  
with sheer voile tear.  
Double sleeve flower effect

100% silk



FUCHSIA SKIRT  
AMALIA MODEL  
Asymmetric skirt  
with elastic waist  
and left side tied detail

100% silk







STRAPLESS DRESS  
BALI MODEL  
Wide 7/8 dress  
with side tear  
and satin waist in contrast

100% silk



SHORT JUMPSUIT  
BALI MODEL  
Short jumpsuit  
with sheer voile inserts

100% polyester

# STILE ATELIER

Immagina, crea, osa

THE NEW SPRING-SUMMER 2018 COLLECTION SUPPORTS AND ENRICHES  
THE PHILOSOPHY OF STILE ATELIER:  
RESEARCH, QUALITY, CRAFTSMANSHIP AND COMPETENCE.

STILE ATELIER WANTS TO CLOTHE THE WOMEN THAT IN A DRESS  
SEE ALL THE PASSION TO REALIZE IT AND THAT FEEL ALL THIS ENERGY  
WHEN THEY WEAR IT.

OUR FUNDAMENTAL POINTS IS THE MADE IN ITALY  
AND OUR FAITH THE HIGHT QUALITY OF THE PRODUCT.

ALL OUR DRESSES CAN BE PERSONALIZED, MADE-TO-MEASURE  
AND READY-TO-WEAR. WE DON'T PUT LIMITS TO OUR WORK.

THE WORLD OF STILE ATELIER IS WAITING FOR YOU!

IMMAGINA, CREA, OSA

*Aurora*



**Aurora Bertocchi**

Head office - 3479514697

E-mail: [info@stileatelier.it](mailto:info@stileatelier.it)

Site: [www.stileatelier.it](http://www.stileatelier.it)

Instagram: [stileatelier\\_official](https://www.instagram.com/stileatelier_official)

Facebook: [Stile Atelier](https://www.facebook.com/StileAtelier)